

# TRAVELS NOW AND THEN

© Christopher Earls Brennan

## GRENOBLE 2016

Amtrak: eTicket and Receipt for Your 07/02/2016 T... - Brennan, Christopher E.

### Amtrak: eTicket and Receipt for Your 07/02/2016 Trip - CHRISTOPHER BRENNEN

etickets@amtrak.com

Mon 6/6/2016 1:50 PM

To: Brennan, Christopher E. <brennen@caltech.edu>;

1 attachment (16 KB)

Brennen Christopher 201606061650320102.pdf;

#### SALES RECEIPT

Purchased: 06/06/2016 1:50 PM PT

Thank you for your purchase.

1. Retain this receipt for your records.
2. Print the attached eTicket and carry during your trip.

Merchant ID 00920  
 60 Massachusetts Avenue  
 Washington, DC 20002  
 800-USA-RAIL  
 Amtrak.com

#### Reservation Number - BC248B

NEW HAVEN, CT - NEWARK AIRPORT, NJ (One-Way)

JUNE 6, 2016

#### Billing Information

CHRISTOPHER E BRENNEN CALTECH 104-44 1200 E.CALIF.BLVD PASADENA, CA 91125	
<b>Visa</b> ending in 3207 (Purchase) Authorization Code 03733D	<b>Total    \$39.95</b>

#### Purchase Summary - Ticket Number 1580920668639

<b>Train 161: NEW HAVEN, CT - NEWARK LIBERTY INTERNATIONAL AIRPORT, NJ</b> Depart 12:09 PM, Saturday, July 2, 2016 1 RESERVED COACH SEAT	<b>\$39.95</b>
--	----------------

<https://outlook.office.com/owa/?viewmodel=ReadMessageItem&ItemID=AAMkAGQxMWJmMjY2LTNiODU0NDQ1YS05MTY0LWU2M2M2NGMzYWYxNABG...> 1/2

Airfare, Hotels, Travel Deals, Cheap Flights, Cheap Tickets, Discount Airline Tickets



[Login with Facebook](#) [E-Mail \(beta\)](#) [Credit Card Authorization](#) [Cancellation](#) [Regulations](#)

[Flights](#) [Changes by E-Mail](#) [Insurance](#) [Contact](#) [Support](#) [Login](#)

Information

**Trip Tools**

- [Change my Trip](#)
- [Print my trip](#)
- [Cancel my trip](#)

**Airfare Company Address**

4619 41st Street NW, Suite 300, Washington DC 20016.

1-800-AIR-FARE(247-3273) 703-379-1777

**Call Center Hours**

Open 24 Hours / 365 Days

My Trip

**Trip Details**

Your booking is confirmed, and it is under processing. We will send you email once it is ticketed You don't need to do any action at the moment.

**Ticket(s) Number: 016-7815330853**

[Rules and regulations](#)

**Traveler(s) Information** | 1 Traveler(s)

**1 Adult:** christopher brennen

**Confirmation Number: 7NPUQX**

United #  
MF2X78

**Your Itinerary**

Airline	Flight	From	To	Departure	Arrival	Stops
UA-United Airlines	956	EWB-Newark Int, New Jersey, USA	GVA-Geneva, Switzerland	7/2/2016 5:55:00 PM	7/3/2016 7:45:00 AM	0
LX-Swiss	3216	GVA-Geneva, Switzerland	EWB-Newark Int, New Jersey, USA	7/8/2016 9:20:00 AM	7/8/2016 12:10:00 PM	0

FOR TRAVEL TO/FROM, WITHIN THE US, PLEASE VISIT: [click here](#)  
 CHECK WITH THE AIRLINE IF TRANSIT VISA REQUIRED  
 VISA REQUIREMENT CONTACT THE EMBASSY WHERE THE PASSPORT ISSUED.  
 FOR SEATS ASSIGNMENTS PLEASE GO TO WWW.BRUSSELSAIRLINES.COM  
 FOR MEAL PLEASE GO TO WWW.BRUSSELSAIRLINES.COM  
 FOR WHEEL CHAIR PLEASE GO TO WWW.BRUSSELSAIRLINES.COM  
 FOR FREQUENT FLYER PLEASE GO TO WWW.BRUSSELSAIRLINES.COM  
 FOR PETS PLEASE GO TO WWW.BRUSSELSAIRLINES.COM  
 FOR LUGGAGE PLEASE GO TO WWW.BRUSSELSAIRLINES.COM  
 \*\*\* YOUR CREDIT CARD MAY SHOW ONE OR MORE CHARGES  
 \*\*\* WITH A TOTAL PRICE OF USD 1364.43 \*\*\*  
 CALL AIRLINE 72HRS PRIOR DEPARTURE  
 TO RECONFIRM RESERVATION & TICKET IF THERE IS ANY SCHEDULE CHANGE DONE BY THE AIRLINE  
 \*\*\* NO SHOW NO MONEY \*\* TICKET WILL BE SUSPENDED  
 TL AMOUNT CHARGED FOR ALL TICKETS IS USD 1364.43  
 WE WILL MAKE EVERY ATTEMPT WITH THE AIRLINE BUT WE CANNOT GUARANTEE THAT THIS AIRLINE ALLOWS UNACCOMPANIED MINORS TO TRAVEL  
 ST THIS IS ELECTRONIC TICKET

\* The United States (US) Federal laws forbid the carriage of hazardous materials for all flights from, to, or within the US and its territories.

Airfare.com has been online since 1996 and have booked millions of travelers to thousands of destinations. We are available 24 Hours per day and 7 days per week to help you at our call center.

**Cheapest Flight Deals**

- [New York flights](#)
- [Michigan flights](#)
- [Illinois flights](#)
- [District of Columbia flights](#)
- [Maryland flights](#)
- [England flights](#)
- [Cyprus flights](#)
- [Austria flights](#)

**Top Airfare Destinations**

- [France flights](#)
- [Bahamas flights](#)
- [Costa Rica flights](#)
- [Aruba flights](#)
- [Mexico flights](#)
- [Russia flights](#)
- [Spain flights](#)
- [Brazil flights](#)

**Top Selling Hotels**

- [Hong Kong](#)
- [Honolulu](#)
- [Krakow](#)
- [Las Vegas](#)
- [London](#)
- [Los Angeles](#)
- [Manila](#)
- [Mexico City](#)
- [Miami](#)
- [New York](#)
- [Orlando](#)

**In Touch with us**

- [Sitemap](#)
- [Regulations](#)
- [Customer Support](#)
- [Contact Us](#)
- [Feedback](#)
- [Available Jobs](#)
- [FAQ](#)

Airfare.com Company Address: 4619 41st street NW suite 300 Washington DC 20016. 1-800-AIR-FARE(247-3273) 703-379-1777 - Call Center Hours: Open 24 Hours / 365 Days

Copyright © 1995-2016 Airfare.com. All rights reserved.

<http://www.airfare.com/airfare5/flights/mytrip/ViewMyTrip.aspx>

Urgent regarding your flights with airfare.com

# Urgent regarding your flights with airfare.com

cs@airfare.com

Mon 6/6

Brennen, Christopher E. ✉

👤 Reply all | ▾

Grenoble16

To help protect your privacy, some content in this message has been blocked. To re-enable the blocked features, [click here](#).

To always show content from this sender, [click here](#).

You replied on 6/6/2016 9:12 AM.

📧 Reply all | ▾ 🗑 Delete Junk | ▾ ⋮

📁 Action Items



Flights, Hotels & Much more.

[Click here to manage your trip](#)

### Traveler(s) Information | 1 Traveler(s)

1 Adult: christopher brennen

## Live Itinerary

Number of legs does not match 2<>3

United Airlines	<b>EWR-Newark</b> Sat 02Jul 05:55 PM	<b>GVA-Geneva</b> Sun 03Jul 07:45 AM	956	0
Swiss OPERATED BY UNITED AIRLINES	<b>GVA-Geneva</b> Fri 08Jul 09:20 AM	<b>EWR-Newark</b> Fri 08Jul 12:10 PM	3216	0

**Leg does not match the history**  
**Leg does not match the history**  
**Total Price: \$1293.43**  
**Confirmation Number: 7NPUQX**

**Ticket(s) Number:**

<https://outlook.office.com/owa/projection.aspx>

6/7/2016

Thank You for Choosing United Airlines | United Airlines

SEARCH FLIGHTS → CHOOSE FLIGHTS → TRIP ITINERARY → TRAVELER INFORMATION → COMPLETE PURCHASE → CONFIRMATION

### Thank You for Choosing United Airlines

Your purchase is confirmed. Thank you for choosing United Airlines.  
A confirmation email will be sent to brennen@caltech.edu

#### Economy Plus

Purchase Economy Plus® seating and enjoy more space to relax. Book early for the best availability.

#### Geneva Hotels

Hotel rates are available for Geneva.

[Search Hotels >](#)

#### Geneva Car Rentals

Enjoy up to 40% off and 2,750 miles on rentals of 1 or more days

[Quote this offer >](#)



Site Feedback

#### Purchase Summary

#### Economy Plus

##### EWR - GVA

Economy Plus Seat - 1 Traveler      **\$169.00**  
Receipt 01629265790784

**Total Price:                      \$169.00**

#### Payment Information

Name of Cardholder:      **Christopher E Brennen**  
Card Type:                      **Visa**  
Card Number:                **XXXXXXXXXXXX3207**

[Back to Travel Details](#)

u.united.com/web/en-US/apps/reservation/flight/seat/confirm.aspx

1/2

Urgent regarding your flights with airfare.com

016-7815330853

[Rules and regulations](#)

**Insurance:** Insurance not included

**Payments Details:**

Base: \$652.00

Taxes/Fees: \$641.43

**Total Price: \$1293.43 USD**

Additional baggage fees may apply

FOR TRAVEL TO/FROM, WITHIN THE US, PLEASE VISIT: [click here](#)

CHECK WITH THE AIRLINE IF TRANSIT VISA REQUIRED

VISA REQUIREMENT CONTACT THE EMBASSY WHERE THE PASSPORT ISSUED.

FOR SEATS ASSIGNMENTS PLEASE GO TO [WWW.BRUSSELSAIRLINES.COM](http://WWW.BRUSSELSAIRLINES.COM)

FOR MEAL PLEASE GO TO [WWW.BRUSSELSAIRLINES.COM](http://WWW.BRUSSELSAIRLINES.COM)

FOR WHEEL CHAIR PLEASE GO TO [WWW.BRUSSELSAIRLINES.COM](http://WWW.BRUSSELSAIRLINES.COM)

FOR FREQUENT FLYER PLEASE GO TO [WWW.BRUSSELSAIRLINES.COM](http://WWW.BRUSSELSAIRLINES.COM)

FOR PETS PLEASE GO TO [WWW.BRUSSELSAIRLINES.COM](http://WWW.BRUSSELSAIRLINES.COM)

FOR LUGGAGE PLEASE GO TO [WWW.BRUSSELSAIRLINES.COM](http://WWW.BRUSSELSAIRLINES.COM)

\*\*\* YOUR CREDIT CARD MAY SHOW ONE OR MORE CHARGES

\*\*\* WITH A TOTAL PRICE OF USD 1364.43 \*\*\*

CALL AIRLINE 72HRS PRIOR DEPARTURE

TO RECONFIRM RESERVATION & TICKET IF THERE

IS ANY SCHEDULE CHANGE DONE BY THE AIRLINE

\*\*\* NO SHOW NO MONEY \*\* TICKET WILL BE SUSPENDED

TL AMOUNT CHARGED FOR ALL TICKETS IS USD 1364.43

<https://outlook.office.com/owa/projection.aspx>

Premium Seats Confirmation

# Premium Seats Confirmation

**United Airlines, Inc.** <unitedairlines@united.com>  
Tue 6/7  
Brennen, Christopher E. ✕

📧 Reply all | ▾

Grenoble16

To help protect your privacy, some content in this message has been blocked. To re-enable the blocked features, [click here](#).

To always show content from this sender, [click here](#)

📧 Reply all | ▾ 🗑 Delete Junk | ▾ ⋮



Add [unitedairlines@united.com](mailto:unitedairlines@united.com) to your address book. [See instructions](#).

United Airlines

Tue., Jun. 7, 2016

[united.com](#) | [Deals & Offers](#) | [Reservations](#) | [Earn MileagePlus® Miles](#) | [My Account](#)

Your purchase is confirmed. Thank you for choosing United Airlines.

Purchase Summary	Confirmation Number
<p>Date of Transaction: Tue., Jun. 7, 2016</p> <p><b>Economy Plus</b></p> <p><b>EWR - GVA</b></p> <p>Economy Plus Seat - 1 Traveler      <b>\$169.00</b>  Receipt 01629265790784</p> <hr/> <p><b>Total Price:                                    \$169.00</b></p>	<p><b>MF2X78</b></p> <p style="font-size: 2em; text-align: center;">23C</p>
<p><b>Billing Information</b></p> <p>Name of Cardholder:      <b>Christopher E Brennen</b>  Card Type:                    <b>Visa</b>  Card Number:                <b>XXXXXXXXXXXX3207</b></p>	

### United Club

Relax in our exclusive airport clubs by purchasing a day pass or an annual membership.

### Geneva Car Rentals

Receive your United Airlines discount and up to 1,500 MileagePlus award miles when you rent with Hertz.

Hertz

<https://outlook.office.com/owa/projection.aspx>

1/2

Transaction Receipt from Airfare.com for \$132.51 ... - Brennen, Christopher E.

# Transaction Receipt from Airfare.com for \$132.51 (USD)

Auto-Receipt <noreply@mail.authorize.net>

Wed 6/8/2016 1:31 PM

To: Brennen, Christopher E. <brennen@caltech.edu>;

Part of the total cost of your tickets from airfare.com

Order Information

Description: Cost of airline tickets from airfare.com  
Invoice Number 7NPUQX  
Customer ID 016-7815330862

**Billing Information**

ChristopherE Brennen  
Caltech 104-44 1200 E.Calif.Blvd  
Pasadena, CA 91125  
US  
brennen@caltech.edu  
16266881381

**Shipping Information**

**Total: \$132.51 (USD)**

Payment Information

Date/Time: 8-Jun-2016 16:30:32 EDT  
Transaction ID: 20003384673  
Payment Method: Visa xxxx3207  
Transaction Type: Purchase  
Auth Code: 03917D

Merchant Contact Information

Airfare.com  
Washington, DC 20016  
US  
cs@airfare.com

Re: Fwd: Fwd: bon de commande signe

## Re: Fwd: Fwd: bon de commande signe

RF

Regiane Fortes &lt;Regiane.Fortes@legi.grenoble-inp.fr&gt;

Today 2:24 AM

Brennen, Christopher E.; commercial.grenoble@residhotel.com ✕

 Reply all | ▾

Inbox

 Reply all | ▾  Delete Junk | ▾ ... 

you can find more information about ResidHotel Central Gare in the following website:

<http://www.residhotel.com/en/le-centralgare-resort.html>

The dossier reference number is :

référence dossier ISSO / réseau Euraxess :

N°74975 : Christopher Earls BRENNEN

If you have any problem, please call me on my cellphone number 0610433849 (from France or (33) 610433849 if overseas call)

If any problem concerning the hotel, you can also contact:

**Mrs Céline ROCHE**  
Commerciale ResidHotel

Phone : 06.89.27.39.07

Good trip and stay in Grenoble !

Yours  
Regiane

PS.: I have tried to call Mr Lebon many times but unfortunately nobody answers.

Le 15/06/2016 à 14:08, Brennen, Christopher E. a écrit :

Dear Regiane:

Many, many thanks for the hotel booking. I look forward very much to visiting Grenoble again.

Chris

Get [Outlook for iOS](#)<https://outlook.office.com/owa/projection.aspx>

1/3





## BON DE COMMANDE

Références à rappeler sur la facture	Code du laboratoire	Contrat	Exercice	N° du Bon
	LEGI	522120100	2016	27

Facture à envoyer à :

INPG ENTREPRISE S.A  
 MINATEC  
 3, Parvis Louis Néel  
 CS 50257  
 38016 Grenoble, Cedex 1

Fournisseur

.ResidHôtel Central Gare  
 .8 place de la gare  
 .38000 Grenoble

Demandeur : Mme Fortes

Téléphone service :

REFERENCE	DESIGNATION DES FOURNITURES OU DU MATERIEL	QUANTITE	PRIX UNIT. (€)	MONTANT (€)
	Hébergement du professeur BRENNEN Christophe Earls du 3 au 7 juillet . Reference dossier ISSO/reseau eurixess : 74975	4	75.00	300.00

Le 10/06/2016  
 Cachet responsable : ADM-LEGI

*Achim WIRTH*  
 DIRECTEUR  
 Laboratoire des Écoulements  
 Géophysique et Industriels

INPG Entreprise SA  
 Site Minatec,  
 3 Parvis Louis Néel,  
 CS 50257,  
 38016 GRENOBLE Cedex 1

Tel +33 (0)4 76 57 45 70  
 Fax +33 (0)4 76 57 45 97

www.inpg-entreprise.com

Les fournitures devront être obligatoirement livrées :

LEGI  
 1209-1211 rue de la piscine  
 38400 Saint Martin D'Heres

INPG ENTREPRISE SA

**Transaction Receipt from Airfare.com for \$132.51 (USD)**

---

**From:** Auto-Receipt noreply@mail.authorize.net  
**To:** Brennen, Christopher E. brennen@caltech.edu  
**Date:** Wednesday, June 8, 4:31 PM

Part of the total cost of your tickets from airfare.com

**Order Information**

Description: Cost of airline tickets from airfare.com  
Invoice Number: 7NPUQX  
Customer ID: 016-7815330862

**Billing Information**

ChristopherE Brennen  
Caltech [104-44 1200](#) E.Calif.Blvd  
Pasadena, CA 91125  
US  
brennen@caltech.edu  
[16266881381](#)

**Shipping Information**

**Total: \$132.51 (USD)**

**Payment Information**

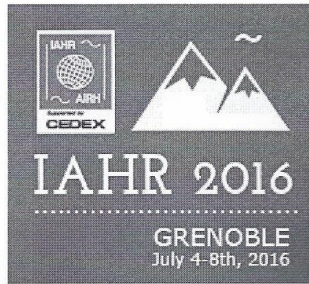
Date/Time: 8-Jun-2016 16:30:32 EDT  
Transaction ID: 20003384673  
Payment Method: Visa xxxx3207  
Transaction Type: Purchase  
Auth Code: 03917D

**Merchant Contact Information**

Airfare.com  
Washington, DC 20016  
US  
cs@airfare.com

---





# 28<sup>th</sup> IAHR Symposium on Hydraulic Machinery and Systems July 4-8th, 2016 Grenoble (France)

## Information & Program



**Bergès: Systems.IV**

Chair: René Autrique, Policonductos, Mexico

- 15:55 Time response of frequency of the hydro-turbine governing system under the coupled action of surge tank and power grid  
by *Z. Peng, J. Yang, W. Guo.*

*Vel. distribution in nuclear core in CANDU reactor.*

28th IAHR Symposium on Hydraulic Machinery and Systems, July 4-8, 2016, Grenoble, France -16

- 16:20 Two-phase flow pattern recognition in a varying section based on void fraction and pressure measurements.  
by *F. De Kerret, I. Benito, C. Beguin, D. Pelletier, S. Etienne.*
- 16:45 Simulation for the transient processes of load rejection under different accident conditions of hydroelectric generating set  
by *W. Guo, J. Yang, J. Chen, Z. Peng, Y. Zhang, C.C. Chen.*
- 17:10 CFD simulation of reverse water-hammer induced by collapse of draft-tube cavity in a model pump-turbine during runaway process  
by *X. Zhang, Y. Cheng, L. Xia, J. Yang.*
- 17:35 On the dynamics of cavitating pumps  
by *C. Brennen.*

**Coulomb: Workshop hydro-abrasive erosion/HPP optimizations to deal with fine sediment**

Chair: Thomas Staubli, Hochschule Luzern, Switzerland

- 15:55 Optimization of hydropower plants with respect to fine sediment focusing on turbine switch-offs during floods  
by *D. Felix, I. Albayrak, A. Abgottspon, R. Boes.*
- 16:25 Design and maintenance of turbine parts subject to erosion by M. Krause, Andritz Hydro, Switzerland
- 16:55 A new methodology for hydro-abrasive erosion tests simulating penstock erosive flow  
by *V. Aumelas, G. Maj, P. Le Calvé, M. Smith, B. Gambiez, X. Mourrat.*
- 17:25 Discussion and concluding remarks by Prof. Dr R. Boes

18:30 Departure from ENSE3 to Voiron Garden Party

Access - Museum

A- | A+ | A | ← | ↻

**Grenoble**

Press Contact social networking Resources downloading Engl

**Musée de Grenoble**

The museum Access  
 The collections Schedules  
 exhibitions Prices  
 Activities At the Museum  
 The resources Continue to visit  
 Support us Rent spaces  
 Come to the museum Your questions

**NEWS** **DIARY** **COME TO THE MUSEUM**

[Home](#) > [Coming to the museum](#) > Access

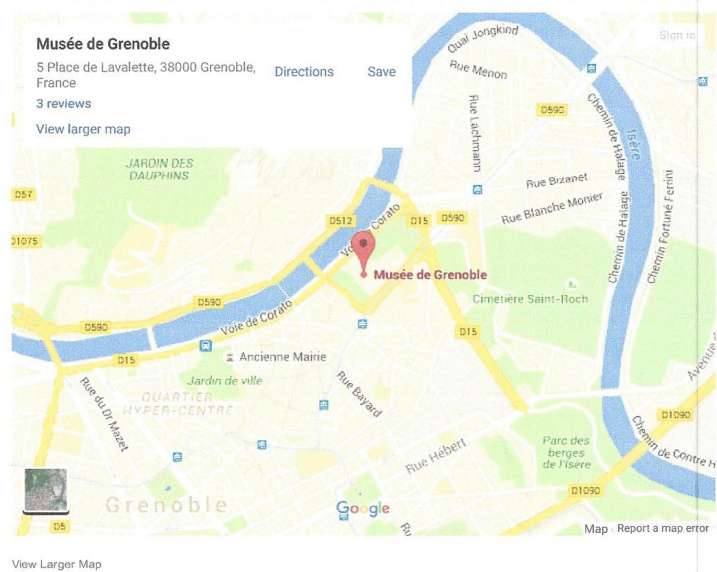
## Access

**Musée de Grenoble**  
 5 Place Lavalette , 38000 Grenoble  
 Tel: 04 76 63 44 44 Email: [musee-de-grenoble@grenoble.fr](mailto:musee-de-grenoble@grenoble.fr)

**// By tram**  
 Line B, stop "Notre Dame Museum"  
 From the train station:  
 Take tram B to stop "stations" direction "Gières Plaine des sports", exit at "Notre Dame Museum."

**// By bus**  
 Lines 16 & 62 stop "Notre Dame Museum"

**// By car**  
 A 48 Lyon-Grenoble, exit *Grenoble Bastille* , follow Stéphane-Jay dock and quay Claude Brosse, then take the Lavalette site.  
 A 41 Chambéry-Grenoble, exit *Grenoble Centre*, follow Boulevard Marechal Ledercr, then take the place Lavalette.



**Parking**

// Parking "Musée de Grenoble" access vehicles at 50 avenue Maréchal Randon 38000 Grenoble or dock Jonking open parking 24h / 24 and 7/7 For more information: <http://www.vincipark.com>

// Removing minute for disabled people, outside the museum, the car park entrance.

// Parking for buses in front of museum at the Lavalette place

## 28th IAHR symposium on Hydraulic Machinery and Systems

### GARDEN PARTY

in VOIRON, on July 6th, 2016

Summer is finally in full swing, and what better way to welcome all IAHR guests than with a lovely garden party?

The 28th IAHR symposium's Garden Party will take place in Voiron stands at a height of 290 meters (950 feet), on the Morge, a tributary of the Isère River. The site offers a wonderful view of the mountains around us.

It is our pleasure to invite you to this wonderful nature site, and to welcome you with music and dinner.



**Recommendation:** Be sure not to wear high heels, and to bring a warm jumper.

**Travel to the garden:** coaches will depart after the conferences, at ENSE3, and will also transport all guests back to ENSE3 by midnight. It is also possible to drive to the site.

## 28th IAHR symposium on Hydraulic Machinery and Systems

### WELCOME RECEPTION

in Musée de Grenoble, on July 4th, 2016

The welcome reception will take place at the Grenoble museum :



With its collections of ancient, modern and contemporary art, the Musée de Grenoble offers you a chance to traverse the history of western painting from the 13th to the 20th centuries. Included are major masterpieces of classical Flemish, Dutch, Italian and Spanish painting; one of 20th century Europe's richest collections; and all the great post-1945 contemporary art trends, right up to the most recent artworks of the 2000s.

**Access to the museum:** <http://www.museedegrenoble.fr/963-infos-pratiques.htm>

From "The Search for Claude Lebon" in "The Far Side of the Sky":

Independence Day, 2016. There was something extra-special about this Independence Day. I was in France, the home of our oldest ally, to attend and present a paper at an international technical conference in Grenoble, a very pleasant French provincial town in the foothills of the Alps. I had been there a number of years before to attend an earlier symposium and had a number of acquaintances who lived and worked in that vicinity. It was a glorious summer day and I had no special obligations at the conference on this July 4. So I decided on an adventure that had its roots some 58 years earlier. I need to digress to set the scene.

About 1957, when I was 16/17 years old, my parents decided to host a young man from France for several weeks in the summer. I have no recollection of how this was arranged but I suspect that my father's affection for things French were part of the motivation. So it happened that a young man named Claude Lebon from Voiron, France, spent several weeks with us in Magherafelt. He came with stylish French clothing like jeans with cuffs at the ankles and elegant sweaters. He brought tennis gear beyond our resources and was determined to exhibit both his skill and his style at the Magherafelt tennis club. So I collected together a few friends to show him some Irish hospitality and provide him an opportunity to interact with his Magherafelt contemporaries. Claude was a handsome and smooth young man with a sexy French accent; not surprisingly, the most willing participants were several of the local girls. This group included Barbara, a close friend whom I had known since kindergarten and whom I had recently fallen seriously in love with (though this depth of sentiment was not to be reciprocated until more than fifty years later). During the ensuing days, much to my dismay, Barbara developed a crush on Claude. There followed a brief kiss in the tennis pavilion, a kiss she later said was her first. The two of them also managed to sneak off to the cinema one evening without my being aware of

it. But Claude's visit and the brief flirtation soon came to an end. It was not until 58 years later and after our marriage, that I learnt from Barbara of the kiss and the movie date (though I did have some suspicions at the time).



*Left: Claude Lebon, the author and Alison Scofield in 1957. Middle: Alison Scofield, Claude and Barbara Badger in 1957.*

*Right: Claude, the author and Eileen McMaster at Magherafelt Tennis Courts.*

Many years later, in March of 1976, I attended an international conference in Grenoble and, on that occasion, I telephoned Claude at his nearby home in Voiron. We had a very pleasant conversation. He was pleased and excited to hear from me again and we both regretted that I did not have time for us to get together. He made me promise that I would visit with him if and when I ever came to Grenoble again. I made note of his address ("Le Verdin, 38500 Voiron, France") and telephone number and that information stayed in my phonebook for many years.

So here I was in Grenoble again in July 2016, 40 years after that phonecall and almost 60 years since I last saw Claude. In the interim much had changed in my life. After the soul-destroying tragedies of the death of my son and my first wife, Doreen, I had reconnected with Barbara; by some magic I had fallen in love with her again and we were married barefooted on a Mexican beach in the presence of our combined six daughters and 13 grandchildren. We often talked of our shared childhood in Magherafelt, of all our friends and adventures. We were beyond secrets and Claude's name inevitably came up but without engendering any resentment on my part. All those years ago we both knew that we would go our own ways; the lovely surprise was that we would come together again after 58 years and fall marvellously in love.

So here I was in Grenoble with a free day to explore and I could not resist the curiosity of trying to find Claude again. I had that address and telephone number from the 1976 phone call but when I dialled it all I got was a recording in French that I assumed was "please leave a message". Nevertheless I decided that I would make the short 20 minute train journey to Voiron in the hope that I might be able to find Claude. The search had turned into an adventure in the French countryside and I have always loved unusual adventures. Besides, it was a lovely, sunny day on which to explore the French countryside.

So it was that I arrived at the sleepy Voiron railway station with only three pieces of information: (1) the address "Le Verdin, 38500 Voiron, France" and photos of the vicinity obtained from the street view in Google maps (2) the telephone number that seemed of no value and (3) a very vague (and its turned out erroneous) recollection that Claude may have become a pharmacist. I decided to explore the third clue first and look for a pharmacy where I might get some information. There were a number of pharmacies but they all seemed to be closed (I never found out why). I walked to the beautiful church in the town center and eventually found a "para-pharmacy" (I still don't know what this is) that was open. A very nice sales lady tried to find Claude Lebon in various computer resources she could think of but drew a blank. In the end she suggested trying the post office and directed me to it. I gave the Post Office clerk the address but, despite trying, he was not able to provide any information. He said (erroneously) that the address was just 500 metres up the road and so I set out to walk. I soon realized using my Google maps that it was much further - and uphill. So I turned around and began to walk back toward the town center in the process trying vainly to find a taxi. I reached the station without success and had to wait some time before a taxi showed up.

Eventually a Grenoble taxi (Grenoblois Taxi, 0476544254 or [www.taxi-grenoble.fr](http://www.taxi-grenoble.fr)) arrived at the station to leave off a passenger. I immediately button-holed the driver lest he should leave without me. As things turned out, I was very fortunate for the taxi driver, Philippe Parodi, not only spoke good English but was also very helpful in my quest. I began by asking him to drive to the address, Le Verdin, 38500 Voiron. When we got close I recognized where we were from my earlier Google Maps exploration and realized that we needed to turn sharp left off the main highway (D1076) onto the very narrow, one-way country road, "Rue de Charpenousse". At this point I was navigating by instinct, an ability I do not understand but that has been surprisingly helpful on a number of previous occasions. It must be based on a set of accumulated recollections of the setting of the desired location.

We proceeded southwards along the very narrow, one-lane Rue de Charpenousse until we came to a spot with houses built right up to the edge of the lane on both sides. Instinctively, I knew this was it and asked the taxi driver to stop in a pullout on the left just north of the houses. Several people in the lane took an interest in our arrival and I got out and approached them. The first person I spoke with said that the house on the right (or west side of the lane) was where Claude Lebon used to live. His son, Romain Lebon, now lived there (Google maps says the address is 52 Rue de Charpenousse, 38500 Voiron, France, with coordinates  $45.390584^{\circ}N, 5.569221^{\circ}E$ ) but was presently at work.





*New Lebon house under construction.*

I knocked on the door but there was no reply. Walking past the houses I saw two men below me on the road just beyond the houses and addressed them. They spoke no English but one gestured for me to accompany him as he walked back up the hill to the house that was on the left as we had approached this spot (opposite to the Lebon house). He indicated that someone in that house spoke English. I followed him and was introduced to Henri Martinenghi (henri.martinenghi@orange.fr) who answered the door. Henri invited me inside his home and told me that he knew Claude Lebon who used to live in the house on the other side of the road (opposite his home) but that Claude had moved. A son of his now lives there but was work. Henri also fetched his wife, Jill, who turned out to be from Australia and so communication was much improved. They told me that Claude's first wife had died but that he had remarried. Moreover, he and his second wife lived just a few kilometers away.

The Martinenghis gave directions to the taxi driver as to how to get to Claude Lebon's new home and we set off again on our now epic journey. The taxi driver was now fully invested in the search and eager to press on. We passed through the hamlet of La Murette heading for "38500 St. Blaise du Buis" along "Route de la Couratiere" in the village of "Le Petit Voye". Following some signs and with several stops to ask passers-by if they knew Claude Lebon we eventually came to an intersection where "Rue du Petit Voye" branched off to the left. There we stopped a number of cars to enquire of Claude Lebon. After several such efforts, a farmer driving a tractor said he knew Claude and provided directions southwest along "Rue du Petit Voye" (which morphed into "Route de la Plaine") to where there was a turn-off on the right onto a short lane where there was a house with a black gate. Following these directions, we came to the closed black gate. This was clearly the house that the farmer had described, the house where Claude lived (Google Maps says the address is 120-380 Chemin du Boteau, 38140 Saint-Blaise-du-Buis, France, coordinates  $45^{\circ}22'30.2^{\circ}N$   $5^{\circ}29'57.1^{\circ}E$ ). Ringing the bell at the gate, a woman emerged from the new house and told the taxi driver that she was Claude Lebon's wife. Our wild ride through the French countryside had come to a successful conclusion! The taxi driver was clearly delighted with this success as was I.

The woman neither spoke nor understood English. She told the taxi driver that Claude was playing bridge but would be home in about an hour. Moreover, I was welcome to come inside and wait for him. So I said a most grateful farewell to my fellow traveller, the taxi driver. He refused to accept full compensation for the fare, perhaps because he had enjoyed the departure from his usual business. I was very lucky to find a driver who spoke some English. In the days that followed, I wrote to the taxi company to express my thanks to him for his company and help.

Mrs. Pierrette Lebon was very kind to invite this stranger into her house to wait for an hour for her husband to return from playing bridge. She spoke not a word of English and I understood very, very little French. But she nattered on in French seemingly thinking that I understood. Despite these problems I gathered that Claude and his first wife, Martine, had three children, two boys and a girl. Martine had died suddenly on Feb.14, 2008. Pierrette and Claude were married shortly thereafter. My impression was that Pierrette wanted a home of their own and that is why Claude built this house in St. Blaise du Buis that seemed only a few years old (the Google maps photo shows it under construction).

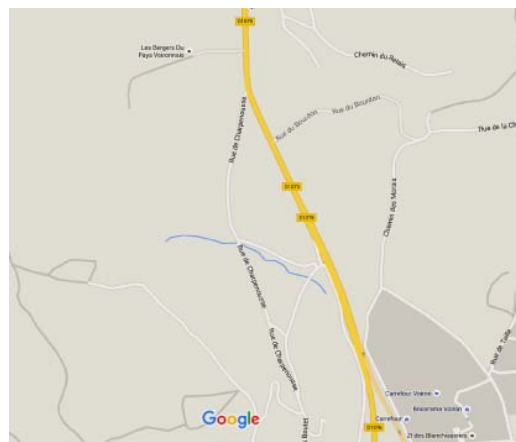
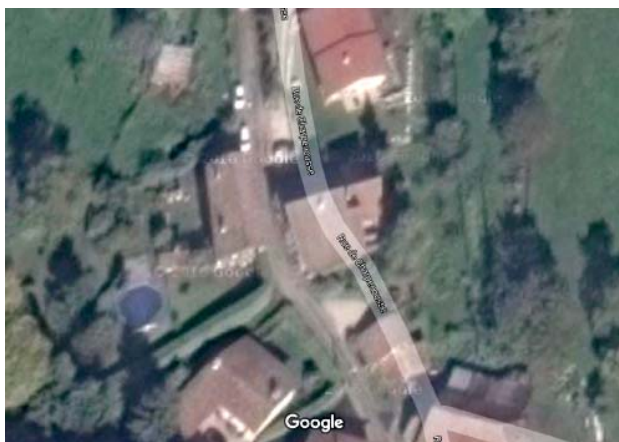
When the conversation turned to my wife, I decided to call Barbara and then passed the phone to Pierrette who was intrigued by the fact that Barbara spoke French. They had a short conversation that Pierrette seemed to enjoy. Throughout the evening she made frequent reference to Barbara and that conversation. Written notes seemed to be marginally more successful for communication and in this way we exchanged contact information, email addresses and telephone numbers. Pierrette also gave me a tour of her garden and we were sitting outside on the front porch when Claude drove up after the conclusion of his bridge tournament. Though I would not have recognized him in the street, I remembered some of his gestures. He was shorter than I remembered and had clearly put on some weight in the intervening years. He greeted me warmly, "Christopher ...", and we immediately began an easy and interesting conversation. While his English was not great we communicated quite easily and the conversation naturally covered many of our personal histories from the intervening years. He had a good recollection of most of the people and places he had known in Magherafelt. He asked about my father and mother and about my brother Michael though I am not sure he remembered my younger brother and sister, Colin and Paula. He certainly remembered Barbara and seemed slightly taken aback when he learnt that I was now married to her. However, by the end of the evening, he was insisting that I come back to Voiron and bring Barbara with me. I whispered to myself "Fat chance of that ...".



*Claude Lebon and the author in 2016.*

Pierrette served us a lovely dinner on the front patio, preceded by Claude opening a bottle of Champagne in my honor. In short, we had a pleasant and interesting evening. We exchanged invitations to California/Connecticut and to Voiron. I asked Claude about his working life. Apparently, he spent his life in charge of the family business, "Elve - Lebon et Vernay", a company in the Voiron area that makes paper products. It was founded in 1850 by the Lebon and Vernay families and today employs 55 people. Located at Rue de la Manche, 38430 Saint-Jean-de-Moirans, France, (Phone: +33476050145) the company has a readily found website. Claude retired several years ago and I think one of his sons now works for the company. In his retirement Claude spends a couple of days a week playing bridge. Prior to my visit I had found his photo on the website of the local bridge club that he patronizes and of which he is a treasurer.

Eventually it was time for me to take my leave. We said our goodbyes and Claude called a taxi that took me back to the railway station in Grenoble. It had been a delightful adventure, quieter and more sentimental than most of my wanderings. Days later, on the train from Grenoble to Geneva (and the flight back to New York), my mind turned often to the pleasure of that afternoon and evening. I tried to understand the source of my interest in making contact again with Claude. Was it in any way motivated by resentment over the events of 58 years before? I could understand why an objective observer might think so. But, truthfully, I could find no trace of that in my own soul. Rather it was an adventure motivated by opportunity, by a very special set of circumstances, by the beauty of that summer day and by the ambiance of the French countryside. On the other hand one can never be sure of the temptations buried behind the conscious mind. I can only say that I have searched as deeply as I can and find no such unworthy motivation. If we had both loved Barbara there could be no fault in that.



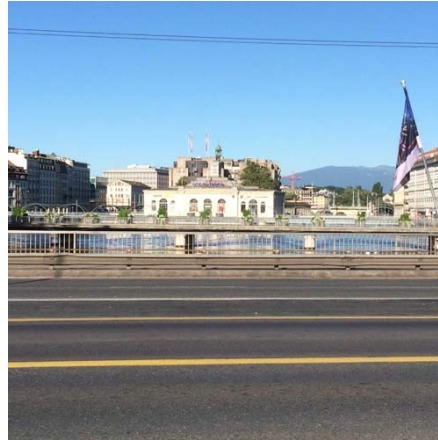
*LeVerdin*



*With Claude Lebon*



*Claude Lebon's home*



*Geneva*



*Geneva*



169923

Christopher Brennen

CH-

*Facture*

Date:	07.07.2016	Chambre:	319
Facture N°:	169923	Arrivée:	07.07.2016
Reservation:	145383/1	Départ:	08.07.2016
N° TVA:	CHE-109.615.467		

Client: Brennen, Christopher, chambre: 319, du 07.07.2016 au 08.07.2016				
Date	Prestation	Quantité	Prix CHF	Total CHF
07.07.2016	Taxe de Séjour	1	4.00	4.00

Solde prestations	4.00
-------------------	------

Date	Type de paiement	Paiements CHF
07.07.2016	Visa	-4.00

Solde paiements	-4.00
Reste	0.00

Code/ T.V.A. %	Hors Taxes CHF	T.V.A. CHF	Total T.T.C. CHF
3 Taxe de séjour 0%	4.00	0.00	4.00

Hotels.com reservation confirmation 130165989270 ... - Brennen, Christopher E.

# Hotels.com reservation confirmation 130165989270 - Nash Airport Hotel - Meyrin

Hotels.com <confirmation@mail.hotels.com>

Mon 6/6/2016 9:39 AM

To: Brennen, Christopher E. <brennen@caltech.edu>;

[Hotels.com](#)

**Dear Christopher, your reservation is guaranteed and all paid for.**

*Liebe(r) Christopher Brennen, Ihre Buchung ist jetzt garantiert und vollständig bezahlt.*

[Manage booking](#)

[Print receipt](#)

[Book again](#)

## Nash Airport Hotel

Chemin de la Violette 11  
Cointrin  
Meyrin  
1216  
CH  
+41225555777

## Nash Airport Hotel

<b>Hotels.com confirmation number</b>	130165989270
<b>Check-in</b>	Thursday, July 7, 2016 (3 PM)
<b>Anreise</b>	<i>Donnerstag, 7. Juli 2016 (15:00 Uhr)</i>
<b>Check-out</b>	Friday, July 8, 2016 (Noon)
<b>Abreise</b>	<i>Freitag, 8. Juli 2016 (12:00 Uhr)</i>
<b>Your stay</b>	1 night, 1 room
<b>Cancellation policy</b>	Non-refundable
<b>Total amount paid</b>	<b>\$133.21</b>

https://outlook.office.com/owa/?viewmodel=ReadMessageItem&ItemID=AAMkAGQxMWJmMjY2LTNiODUtNDQ1YS05MTY0LWU2M2M2NGMzYWYxNABG... 1/4

Hotels.com - Hotel rooms with reviews. Discounts and Deals on 85,000 hotels worldwide



Book online or call  
800-246-8357

Your booking has been paid in full.  
Your Hotels.com confirmation number: 130165989270. Thank you for booking with Hotels.com

Booking details



**Nash Airport Hotel**  
Chemin de la Violette 11  
Cointrin  
Meyrin  
1216  
CH  
+41225555777

Summary & Room Charges

Check in: Thursday, July 7, 2016  
Check out: Friday, July 8, 2016  
Duration: 1 night  
Room type: Double Room  
Total rooms: 1

Room 1 Double Room

Number of nights: 1 night  
Number of guests: Christopher Brennen , 1 adult  
Preferences\*: Non Smoking, Queen Bed  
Nightly charges: Thursday, July 7, 2016

Make changes to room reservation.

\$128.33

Tax recovery charges and service fees \$4.88  
Total: \$133.21  
Additional fees charged by the hotel 4.07 CHF  
Total cost for this booking \$137.31

\* Please note: Room preferences and Special requests cannot be guaranteed. Special requests are subject to availability upon check-in and may incur additional charges.

Payment information

Name on card: Christopher Brennen  
Card type: Visa  
Card number: 440066XXXXX3207  
Billing address: 91125  
US

Additional hotel information

Checking in:

Extra-person charges may apply and vary depending on hotel policy.  
Government-issued photo identification and a credit card or cash deposit are required at check-in for incidental charges.  
Special requests are subject to availability upon check-in and may incur additional charges. Special requests cannot be guaranteed.

Important notices:

Airport shuttle service is available at scheduled times. Contact the property in advance to get details. The hotel restaurant is closed for lunch on Saturdays, Sundays and public holidays. For more details, please contact the office using the information on the reservation confirmation received after booking.  
This property provides a complimentary shuttle to/from the airport daily at scheduled times. For more details, please contact the office using the information on the reservation confirmation received after booking.

Amenity highlights:

Nash Airport Hotel features a 24-hour health club and a sauna. The hotel offers a restaurant. A bar/lounge is on site where guests can unwind with a drink. High-speed wireless Internet access is complimentary.  
This 4-star property offers access to a 24-hour business center and meeting rooms. 3 meeting rooms are available. This Meyrin hotel also offers a terrace, tour/ticket assistance, and multilingual staff. A roundtrip airport shuttle is complimentary to guests at scheduled times. Limited onsite parking is available on a first-come, first-served basis (surcharge).  
Nash Airport Hotel is a smoke-free property.

Notification and fees:

Self parking costs CHF 15 per day with in/out privileges  
Rollaway beds are available for an additional charge  
Buffet breakfast is offered for an extra charge of CHF 18 per person (approximately)  
Babysitting/childcare is available for an extra charge

Hotel Terms & Conditions

Extra-person charges may apply and vary depending on hotel policy.  
Government-issued photo identification and a credit card or cash deposit are required at check-in for incidental charges.  
Special requests are subject to availability upon check-in and may incur additional charges. Special requests cannot be guaranteed.

[https://ssl.hotels.com/customer\\_care/booking\\_details.html?id=r4ITr65kOEM-L7aPfulROp2myMmA0dpHKUc98B0nhZ6T0NuuT5SyCYv8z2xfZu8F\\_n46lHeo...](https://ssl.hotels.com/customer_care/booking_details.html?id=r4ITr65kOEM-L7aPfulROp2myMmA0dpHKUc98B0nhZ6T0NuuT5SyCYv8z2xfZu8F_n46lHeo...) 1/2

[Back to table of contents](#)

Last updated 7/30/99.  
Christopher E. Brennen